





Don't change your life, improve it.

Visto lets you see, hear and speak with your visitors easily from your own smartphone whether you're at home or outside, on holiday or at work. **Wherever you are.**





More than a doorbell.

Visto is more than just a video doorbell. It is a device that becomes part of your life. It is for convenience, so you can enjoy your garden without having to answer the door. It is a security device that allows you to always know who is at your door. It can give you motion notifications so you know when your kids arrive home from school or when a customer walks by your shop entrance. Overall it is something that you have been missing in your life and you didn't even know it!



HD Camera

HIGH QUALITY VIDEO RESOLUTION



Motion Detection

SENDS ALERTS TO SMARTPHONE



Two-Way Audio

VIA BUILT IN SPEAKER AND MICROPHONE



Night Vision

24/7 PROTECTION THANKS TO INFRARED LEDS



Connection with home router

WITH ETHERNET CABLE OR WIFI
DEPENDING ON THE MODEL



The most reliable

THE PUSH BUTTON HAS BEEN TESTED
TO WITHSTAND OVER 125,000 USES



Interchangeable front cover

CLOUD WHITE, SILVER MIST AND DARK GRAPHITE



Italian Design

TO BE THE COOLEST KID IN TOWN



Cloud Recording

LIVE RECORDING TO CLOUD SERVICE
WITH SUBSCRIPTION

VISTO. ENJOY THE SMART LIFE





Enhanced Security.

The Visto Cam allows you to watch over the inside of your home or workplace for extended comfort and security. Check in and see what your kids are doing, or what trouble your dog might be getting into. Always be there, even when you are across the world.



HD Camera

HIGH QUALITY VIDEO RESOLUTION



Motion Detection

SENDS ALERTS TO SMARTPHONE



Two-Way Audio

TALK AND LISTEN TO ANYONE IN YOUR HOME



Night Vision

UP TO 5M WITH INFRARED LEDS



Wi-Fi Connected

TO STREAM LIVE IMAGES TO YOUR SMARTPHONE



Cloud Recording

LIVE RECORDING TO CLOUD SERVICE
WITH SUBSCRIPTION



Spot every detail.

The visto external cam allows you to see alternative views of the exterior of your house, workplace, and yard. It allows for an extra layer of security and monitoring in areas like walkways, garages, entrances and alleys.



HD Camera
HIGH QUALITY VIDEO RESOLUTION



Motion Detection
SENDS ALERTS TO SMARTPHONE



IP65 protection
PROTECTED FROM RAIN



Night Vision
UP TO 24M WITH INFRARED LEDS



Wi-Fi or PoE connection
TO GUARANTEE CONSTANT STREAM



Cloud Recording
LIVE RECORDING TO CLOUD SERVICE
WITH SUBSCRIPTION

VISTO. ENJOY THE SMART LIFE





Always with you.

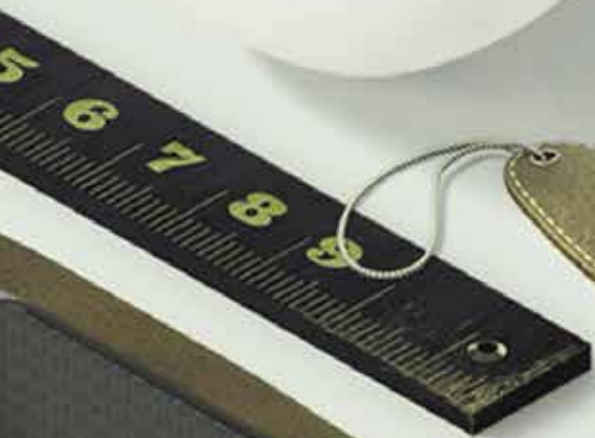
The Visto App is the main interface which allows users to easily interact with their Visto Doorbell and Cameras. It allows full two-way communication in HD video and crystal clear audio while you can view all of your doorbell cameras and accessory cameras which might be on your system with the ability to view all recorded pictures and videos which are stored on your device or in the cloud.



VISTO. ENJOY THE SMART LIFE



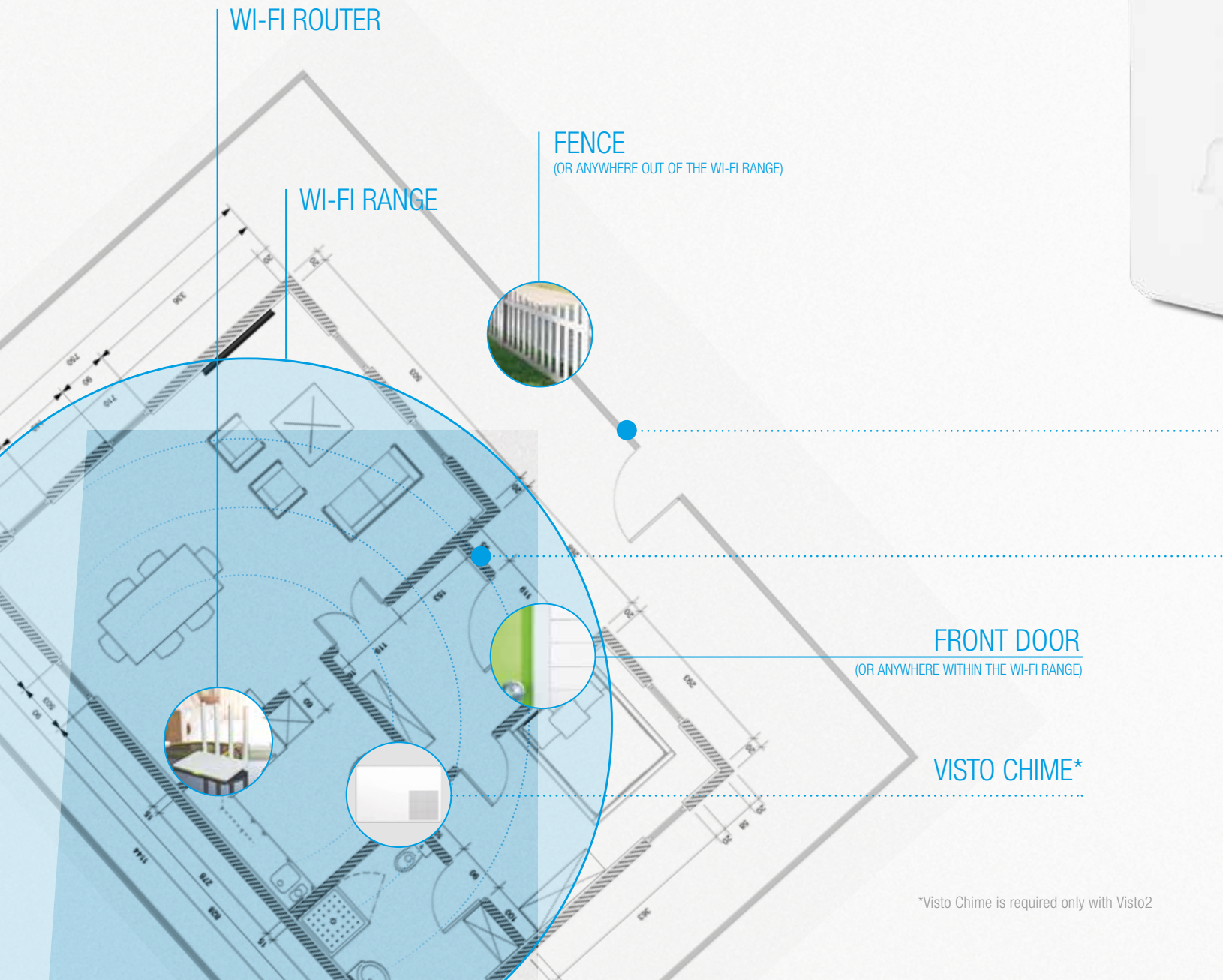
Comelit Visto





Different needs, different solutions.

As well as people, houses are different. Visto brings you the most suitable solution for you and your home with two Wi-Fi kits (for existing systems and for the new installations) and one hard wired solution (Visto2).



*Visto Chime is required only with Visto2



VISTO2

THE HARDWIRED SOLUTION THAT ALLOWS YOU TO CONNECT YOUR VISTO TO YOUR ROUTER EVEN IF IT'S OUTSIDE WI-FI RANGE

The Visto 2 is connected to the Visto Chime through your existing 2-wires, while the Chime communicates with your network via Wi-Fi or Ethernet. This system allows you to install Visto out of your Wi-Fi range.



2 WIRES



VISTO CHIME



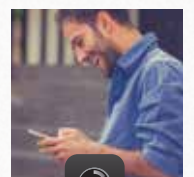
WI-FI OR
ETHERNET



WI-FI ROUTER



WI-FI

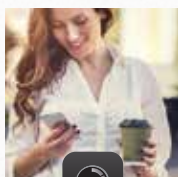


VISTO APP

VISTO WI-FI

THE WI-FI MODEL THAT GETS INSTALLED WITHIN WI-FI RANGE

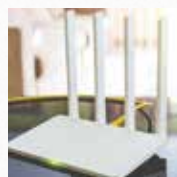
The Visto WiFi draws power from the two wires from your existing doorbell and the power supply connected to it. It then sends the data and communication signal over WiFi to connect to your mobile device for easy communication.



VISTO APP



WI-FI



WI-FI ROUTER



WI-FI





For your home.



KNOW WHO'S
AT THE DOOR



ANSWER WITHOUT STOPPING
WHAT YOU'RE DOING



PACKAGE
PROTECTION



MONITOR YOUR KIDS
WHILE IN ANOTHER ROOM



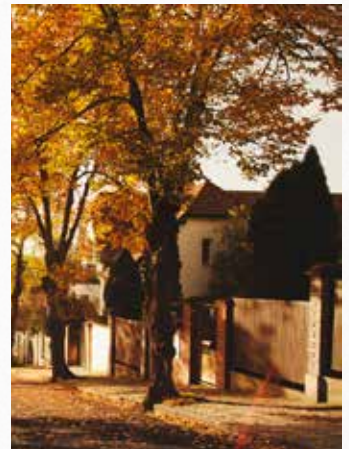
MOTION DETECTION
ALERTS



LOOK WHAT YOUR PET
IS UP TO



KEEP YOUR BELOVED
ONES SAFE



NEIGHBORHOOD
SECURITY





For your business.



EMPLOYEE AND CUSTOMER PROTECTION



DON'T LOSE CUSTOMERS IF YOU LEAVE FOR 5 MINUTES



GOODS PROTECTION



CHECKING ON CAR PARKS



SECURITY OVER NIGHTSHIFT



SCREENING YOUR VISITORS



MULTI BUILDING COMPOUNDS



USE IT AS A HELP POINT



VISTO. ENJOY THE SMART LIFE.





We care.

Comelit has been in the business of developing quality door entry solutions for over 60 years. We strive to look after every detail in the development process to create a product that shows our philosophies of passion, technology and design.

A CONCENTRATE OF PURE DESIGN.

The Comelit products stand out for their unique and original style, characterised by the use of the most high-tech materials with the search for simple lines, essential shapes and avant-garde colors.

BECAUSE IT IS TESTED THROUGH REAL LABORATORY TESTS.

Visto is tested and tested with hard laboratory tests: heat, water, pressure and resistance: the latter guarantees over 125,000 uses during its life.



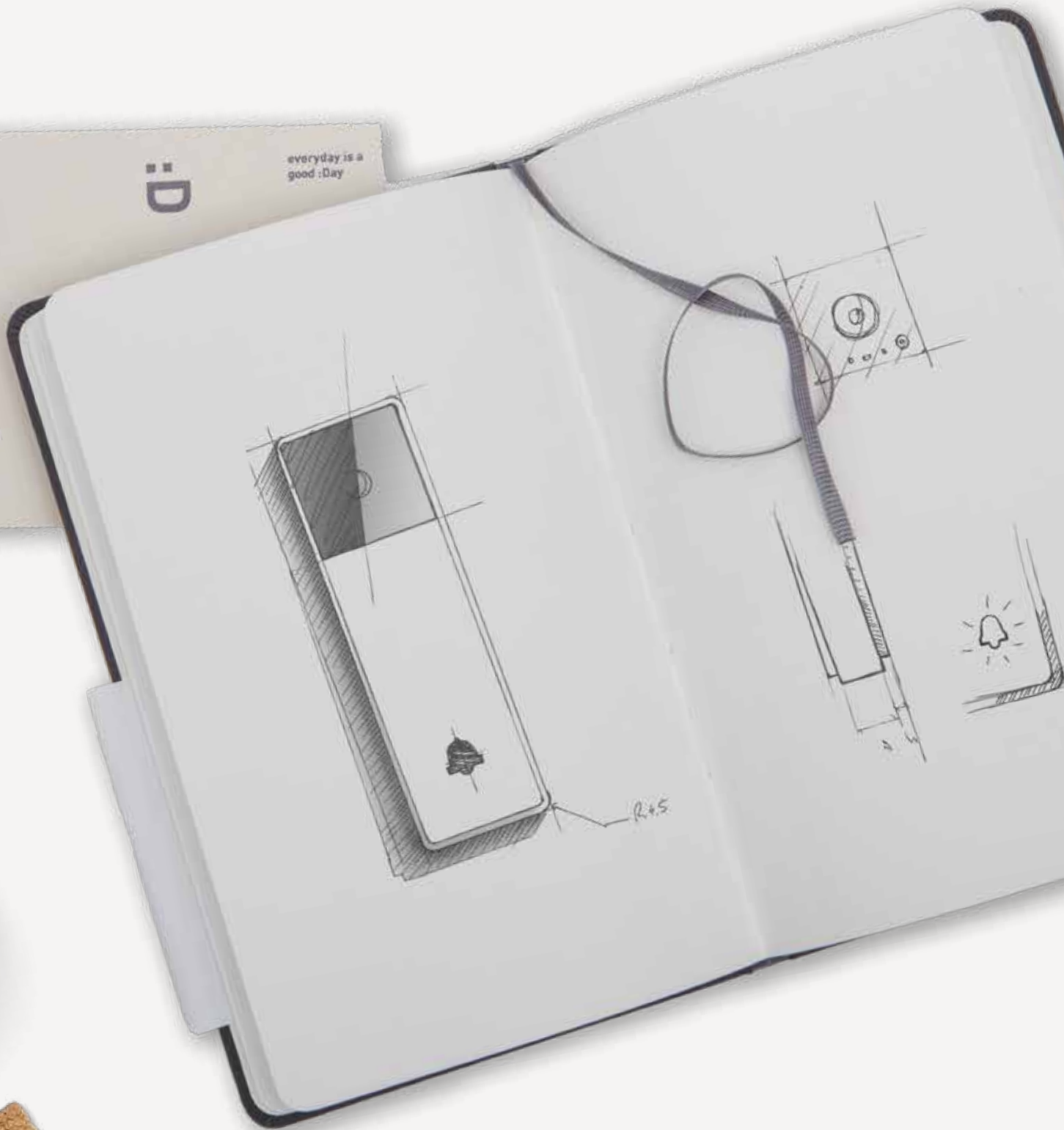
CHECK YOURSELF HOW WE TEST THE QUALITY OF OUR PRODUCTS AND HOW MUCH WE CARE ABOUT THEIR DESIGN.



VISTO. ENJOY THE SMART LIFE



D E S I G N
M I L A N O





Accessoires.

FRONT COVERS

Accessory covers in Silver Mist and Cloud White (and also of course in Dark Graphite if you need to replace it) to help match the Visto with the exterior of your home.



WIRELESS CHIME

For homes and workplaces that do not have wiring or if you want to add additional chimes in rooms or floors which are far from the main door chime. Works with 2 x AA batteries (not included).

ANGLE MOUNT BRACKETS

You're replacing an old doorbell and these angle mount brackets come in horizontal and vertical configuration and can be flipped, to help find the optimal viewing angle for the camera.

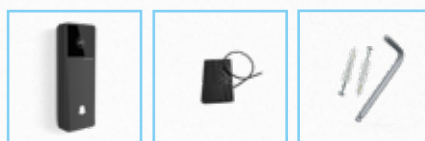


Kits.



VISTO KIT cod. KITVISTO

The Visto Kit utilises the power from your existing doorbell transformer or power supply (12-20Vac or 12-33Vdc). Complete with adapter to interface with your existing doorbell chime. Visto simply connects to your Wi-Fi network using the free to download APP.



VISTO KIT WITH CHIME cod. KITVISTO/C

The Visto Kit with Chime is ideal for installations without a suitable transformer or power supply. The Kit comes complete with power supply unit and wireless chime unit. Visto simply connects to your Wi-Fi network using the free to download APP.



VISTO 2 KIT cod. KITVISTO2

The Visto 2 Kit is ideal for situations where the Wi-Fi coverage is too weak to support connection. The supplied chime is connected via cable or Wi-Fi to your router, and the Visto unit is connected via 2 wires to the Chime.





Cloud Storage.

When you subscribe to Visto Cloud Storage, you are able to record everything that's happening inside and outside your home or workplace.

DON'T MISS A THING.

Store up to 30 days of continuous video in the Cloud, just in case something happens.

HIGHLIGHT PATHS.

With the Visto app you can highlight zones that will send you alerts when someone or something passes by.



DISCOVER MORE ABOUT OUR CLOUD STORAGE PLANS, WITH SPECIFICATIONS AND PRICING.



Any questions?

DO I HAVE TO CHANGE MY TRANSFORMER OR POWER SUPPLY?

No, in most cases you can use the existing transformer or power supply. Transformers that have a voltage from 12 Vac up to 20 Vac are ok, or power supplies that have a voltage of 12 Vdc up to 33 Vdc.

HOW MUCH POWER DOES VISTO CONSUME?

Visto consumes 6 Watts

CAN I USE THE EXISTING DOORBELL CHIME?

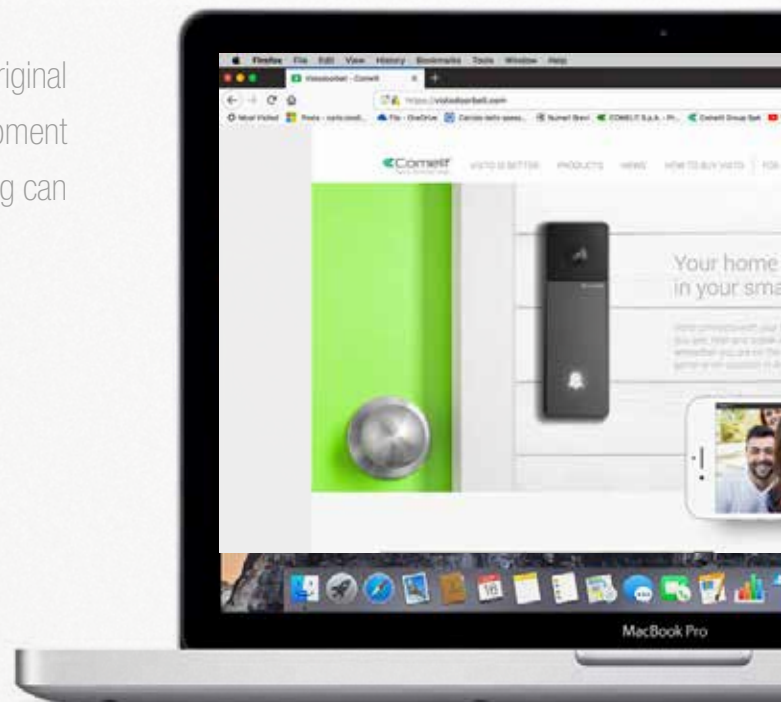
Yes, you can use the existing bell / ringtone. For more information see the manual.

DO I NEED A MOBILE INTERNET CONNECTION?

Yes, you need a "normal" 3G internet connection or higher to be able to answer calls coming from the visto external station.

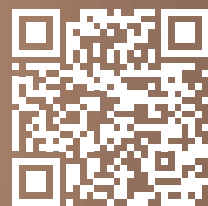
DO I NEED TO DRILL ANY HOLES?

No, in most cases there will be no need to alter the original installation. **Visto** was designed to use existing equipment (transformers and chimes). Usually the existing doorbell wiring can be re-used as well.



Make a honey-do a honey-done!



We know you have better things to do on your weekends like enjoying that football game against your eternal rivals, or you're just not too confident with screwdrivers and wires, so why not take the hassle out of installing it by yourself? Please contact us to find a Pro Visto Installer that can install and program your brand new video doorbell or camera in a blink of an eye and in the proper way.







Specs.

DOORBELLS TECH SPECS

	VISTO WI-FI	VISTO 2
		
MAIN SPECS		
Type	Monoblock entrance panel	Monoblock entrance panel
Type of finish	Plastic	Plastic
Audio/video system	Yes	Yes
Surface mounted	Yes	Yes
Camera	Colour	Colour
Diagonal viewing angle (°)	170	170
Video encoding	H.264	H.264
Type of sensor	1/4" CMOS	1/4" CMOS
Minimum colour illumination (lux)	2	2
Minimum B/W illumination (lux - led IR ON)	0	0
Lens size (mm)	1.6	1.6
Power supply	12-20 VAC / 12-33 VDC	12-24VAC / 48VDC
Signaling LED	Yes	Yes
Buttons to call	1	1
Total buttons	1	1
Operating temperature (°C)	-25 +55	-25 +55
RH max operating humidity (%)	75	75
IP protection rating	IP54	IP54
SOFTWARE/FIRMWARE SPECS		
Video analytics	Motion Detection	Motion Detection
Remote control by mobile	Comelit Visto (Android, iOS) app	Comelit Visto (Android, iOS) app
Push notification	Yes	Yes
Camera pixels (H x V)	SD (320x192) / HD (1280 x 720)	SD (320x192) / HD (1280 x 720)
FUNCTIONS		
Key button function	Yes	Yes
HARDWARE SPECS		
Customisable housing	Yes	Yes
GENERAL DATA		
Product height (mm)	136	136
Product width (mm)	47	47
Product depth (mm)	32	32
Product colour	Dark graphite RAL9011	Dark graphite RAL9011
AUDIO/VIDEO SPECS		
Audio type	Two-way, Full-Duplex, Echo canceler, Noise canceler	Two-way, Full-Duplex, Echo canceler, Noise canceler
Video recording	Local and Cloud	Local and Cloud

CAMERA TECH SPECS

	VISTOCAM	VISTOCAM/E
		
MAIN SPECS		
Type	Internal Cam	Outdoor Cam
Type of finish	Plastic	Aluminum
Audio/video system	Yes	Yes (optional microphone)
Surface mounted	Yes, + desk base and ceiling hanger	Yes
Camera	Colour	Colour
Diagonal viewing angle (°)	170	108
Video encoding	H.264	H.264
Frame rate	25fps	25fps
Type of sensor	1/4" CMOS	1/4" CMOS
Sensitivity (lux)	0 (LED IR on)	0 (LED IR on)
Lens size (mm)	1.6	1.6
Power supply	12VDC	12VDC
Signaling LED	No	No
Operating temperature (°C)	+5 +40	-10 +50
IP protection rating	-	IP65
SOFTWARE/FIRMWARE SPECS		
Video analytics	Motion Detection	Motion Detection
Remote control by mobile	Comelit Visto (Android, iOS) app	Comelit Visto (Android, iOS) app
Push notification	Yes	Yes
Camera pixels (H x V)	SD (320x192) / HD (1280 x 720)	VGA (640 x 480) / HD (1280 x 720)
FUNCTIONS		
Main functions	Motion Detection	Motion Detection
HARDWARE SPECS		
No. IR LEDs / Max. distance (m)	5 meters (2 infrared LEDs)	24 meters (24 infrared LEDs)
Customisable housing	No	No
Wi-Fi	Yes	Yes
LAN Network	No	RJ45 Interface
GENERAL DATA		
Product height (mm)	136	75
Product width (mm)	47	76
Product depth (mm)	32	110
Weight (g)	250	310
Product colour	White RAL9003	Black RAL9011
AUDIO/VIDEO SPECS		
Audio type	Two-way, Full-Duplex, Echo canceler, Noise canceler	Optional External Microphone
Video recording	Local and Cloud	Local and Cloud
ELECTRICAL SPECIFICATIONS		
Max absorption (W)	6	12



FOR MORE INFO:
<http://vistodoorbell.com>

cod. 2632000691
8 10 23903 3706 14

www.comelitgroup.com

 **Comelit**[®]
Passion. Technology. Design.