



HYBRID SOLUTIONS FOR BLOCKS OF FLATS

“Unity makes strength”: today, this saying is truer than ever thanks to the **new 1469 interface** for 2-wire and IP hybrid door entry systems. These two technologies are combined to take on new challenges.

COMELIT
WITH • YOU • ALWAYS

Comelit.

FROM THE BEGINNING.

Since 1956, we have been making history in the door entry phone and door entry monitor sector and have actively contributed to its **ongoing** development. Over the years, the experience gained in this specific sector when it comes to meeting installation **requirements**, such as simplicity, reliability and multiple functions, has allowed us to grow and make a name for ourselves as an **international benchmark company**.



Our **values** and our business **vision** are the foundation upon which we have developed a well-run, well-structured global organization, with **17 branch offices** abroad, more than **800 employees** and a commercial presence in **over 90 countries**.

In addition to video door entry systems, we design and build anti-intrusion, video surveillance, home automation, fire protection and access control systems, which makes us a single partner specializing in protecting people and their environment.

With You. Always.

OUR PROMISE, OUR COMMITMENT.

Being **close** to those who choose Comelit for their customers is our daily **commitment**. Our commitment is demonstrated by the fact that we are constantly researching and developing new, easy-to-install, high-performance solutions and offering daily advice and **assistance** on the phone and on-site, as well as extremely reliable products and systems of the highest quality, **supporting you step by step in your work**. With You. Always. Because **your success is our success** and your satisfied customers are our satisfied customers.



1469

Two worlds coming together

2-wire and IP video door entry systems have never been better connected to meet all our customers' needs. The **1469 interface** allows these two technologies to be perfectly combined, making it **easier** to install two-wire door entry monitor systems with many **functions**, and allowing for unlimited **expandability** of IP video door entry systems.

Combining them is easy: door entry phones and door entry monitors and actuator modules can be installed on the 2-wire riser of the system, while all devices with this technology are supported in the IP part. By adding a multi-user gateway for the IP system, end users will

be able to **receive calls**, including high-definition video calls, directly on their **smartphones** and create **virtual access keys** that they can share. The installer or building manager will be able to remotely enable or disable the Comelit App for users from the app or via web browser, using MyComelit, and to change names on external units.

Combining 2-wire simplicity with multiple functions and expandable IP systems



COMELIT APP Maximum freedom!



Whether you are at work, at the park with your kids or vacationing at the beach, you should always be able to have peace of mind and to **see who comes looking for you** at home. This is now possible with the **Comelit App**: in fact, calls are forwarded directly to your smartphone so that you can answer and open the gate wherever you are!

RETROFIT INSTALLATIONS Well, of course!

Are you renovating an older building and want to **reuse existing 2-wire cabling**, but also add new functions for users or for the building manager?

Comelit has the **solution** you need: all internal units can remain connected via the 2-wire bus, while you can use external units, switchboards and all IP-based products to build a more **flexible, high-performance and continuously updated** basic infrastructure with new functions.

The result? That which was old **will become new again!**



OUR ENTRANCE PANELS From great classics to touchscreen!

ULTRA

3ONE6

EMERGENCY

VANDALCOM

SWITCH

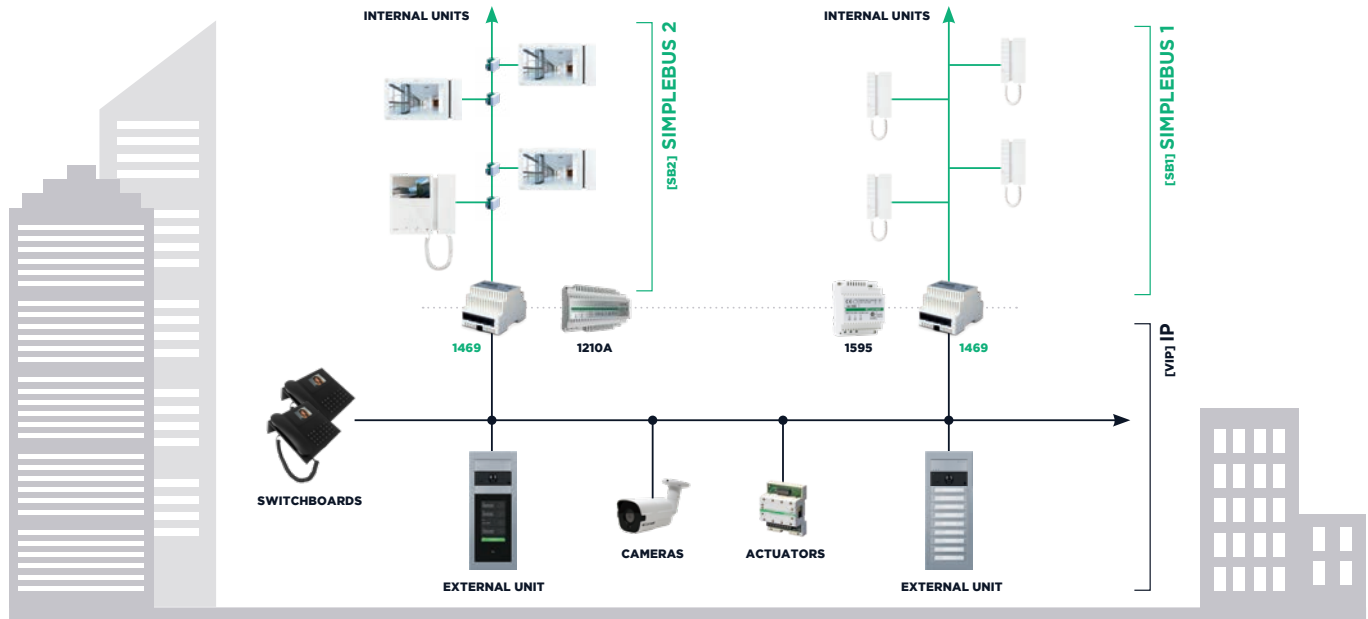
ROMA



IP FUNCTIONS IN THE 2-WIRE WORLD A whole other story!

The programming of 2-wire internal units remains the same. However, by using item 1469, the functions of each internal unit are **configured to perform actions in the IP part of the system**. For each 2-wire riser, up to three distinct lock-release actions are available, both during and outside calls, to be paired with the buttons of the 2-wire internal units. The main switchboard or secondary switchboard functions of the internal units can be connected to one or more IP switchboards, and there are no more limitations to the number of actuators: in the IP part, all the actuator modules required to control **lights, lifts, etc.** can be added to the IP part. If there are also **cameras with RTSP streams** available in the system, they can be configured to operate in the 2-wire system.

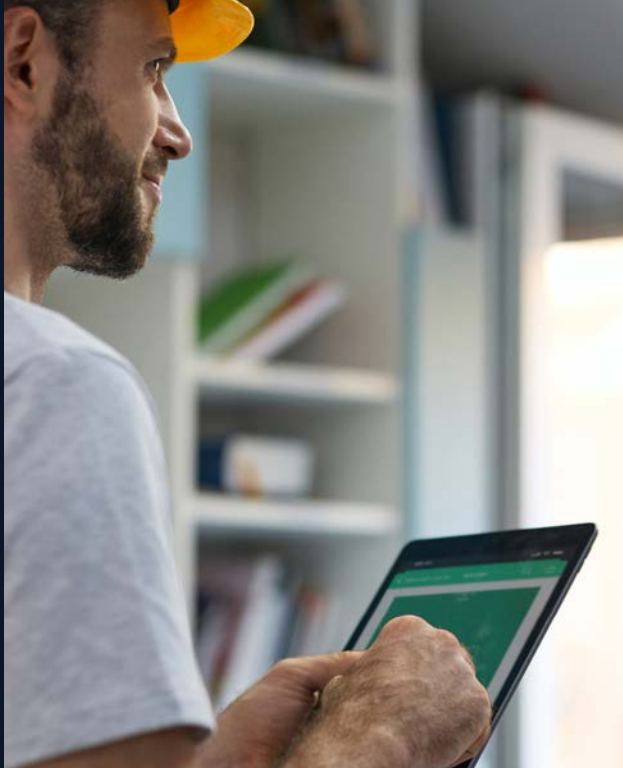




DIFFERENCES AND SIMILARITIES BETWEEN SYSTEMS

Which is the most suitable?

	2-WIRE SOLUTION	HYBRID SOLUTION	IP SOLUTION
Number of users	120,000	No limitations	No limitations
Maximum distance between external and internal unit	1200 m	130 m for Audio or A/V SB2 risers, 200 m for A/V SB1 and 800 m for Audio SB1. No limitations for IP system base	No limitations
Wiring	2 wires for the riser, 4 wires for the external unit	2 wires for 2-wire CAT5 risers or higher IP system base	CAT5 or higher
Remote connection and update	Only with 6741W	Only 6741W for 2-wire risers and all IP devices	All devices
Answering a video entry phone call from the Comelit App	Yes	Yes	Yes
Updating names in the directory from MyComelit	No	IP external units only (with item 1456B)	Yes (with item 1456B)
Switchboards	Yes	No limitations for IP switchboards	No limitations
Memovideo	Only with 6741W	Only with 6741W for 2-wire riser and all video internal units and IP switchboards	All video internal units and IP switchboards
Viewing live video from IP cameras (RTSP)	Viewing from the Comelit APP only with 6741W	Viewing from the Comelit APPs, door entry monitors and IP switchboards	Viewing from the Comelit APP, door entry monitors and IP switchboards
Actuators	Maximum 8	Maximum 8 for 2-wire riser	No limitations
Integration with SIP devices	No	YES (with item 1456G)	YES (with item 1456G)
Call logs and recordings	No	IP devices only	Yes
Support for multiple simult. calls	No	YES (one for each riser)	Yes
Integration with Comelit fire protection	No	IP devices only	Yes
Integration with the Comelit Horus supervision system	No	IP external units only	Yes

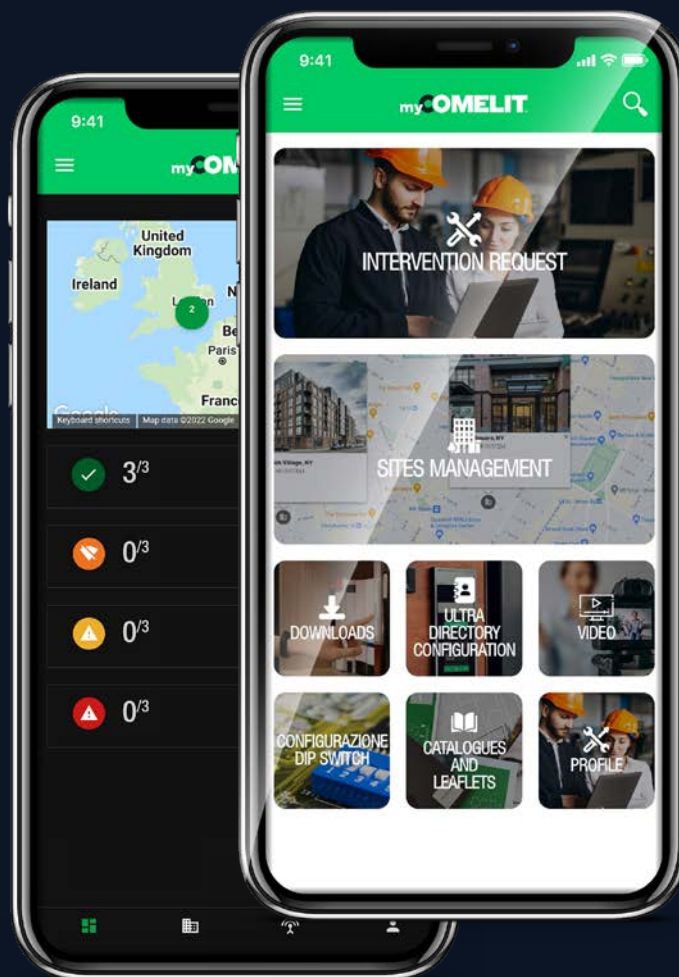


MyComelit.

THE APP YOU WON'T BE ABLE TO LIVE WITHOUT.

Simple, straightforward and customized. Thanks to all the services provided, MyComelit makes work easier for all industry professionals: installers, integrators, developers and property managers.

- Quickly browse through all the technical, application-related and commercial information concerning our products (catalogs, manuals, technical data sheets, etc.)
- Manage and monitor your connected systems and receive notifications on the status of installed products to receive prompt assistance and reduce downtime.
- Enter the names of the Ultra entrance panel (in the Touch or digital Directory versions) via Bluetooth connection.



**WITH
YOU
ALWAYS**

Comelit USA (USA and Canada)

2021 S Myrtle Ave. Monrovia, CA 91016 USA

Tel. (626) 930-0388 - Fax (626) 930-0488 - Toll Free (888) 692-9739 - info@comelitusa.com



8 023903 439526

code
2G32001197

The brands and trade names cited in this publication are the property of their respective owners.
Product dimensions derived from the images are indicative only.